



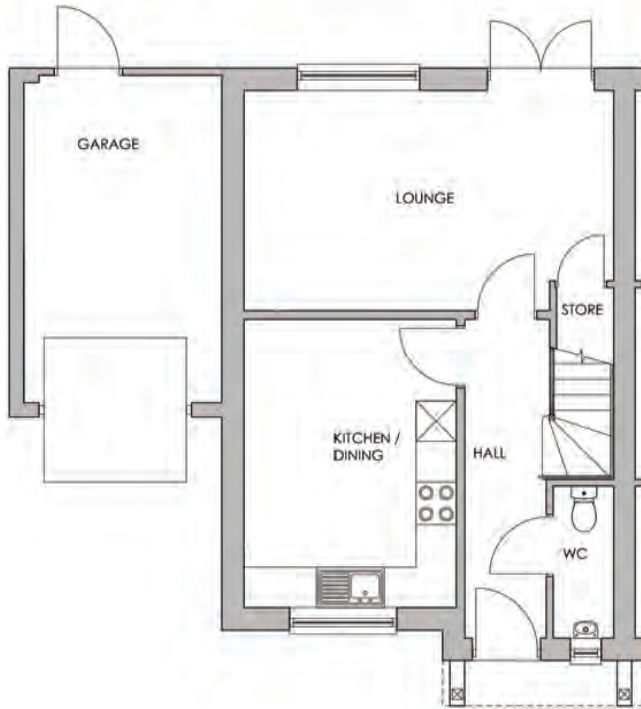
The Eyton

THREE BEDROOM HOUSE

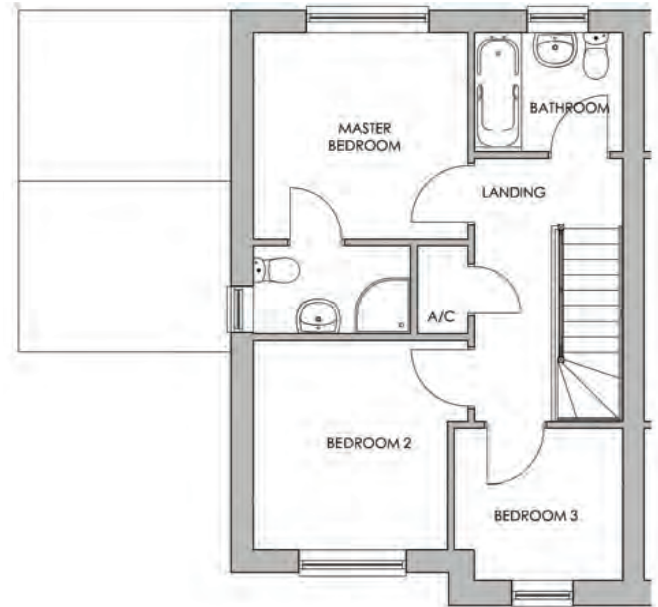


The Eyton

933 SQ FT | THREE BEDROOM HOUSE



Ground Floor



First Floor

The Eyton is a spacious three bedroom semi-detached house of excellent quality offering a fabulous family living space.

The entrance hallway leads to a kitchen/dining room and a light and airy lounge with French doors to the private garden. A handy storage closet and cloakroom are situated on the ground floor.

Upstairs, the landing leads to the master bedroom with ensuite shower room, a further double bedroom, a main bathroom and a bedroom which could alternatively be used as a study or a nursery. The Eyton boasts private driveway with parking for two cars and single garage.

GROUND FLOOR

Lounge	17'11" x 10'8" 5.47 x 3.25 m
Kitchen/ Dining	10'4" x 14' 3.13 x 4.27 m
W.C.	2'11" x 7'5" 0.9 x 2.25 m
Garage	9'8" x 15'11" 2.93 x 4.84 m

FIRST FLOOR

Master Bedroom	10'5" x 10' 3.17 x 3.05 m
EnSuite	7'7" x 4'3" 2.32 x 1.76m
Bedroom 2	9'5" x 10'2" 2.87 x 3.1 m
Bedroom 3	8'2" x 7'5" 2.5 x 2.25 m
Bathroom	7'3" x 5'9" 2.2 x 1.76 m

www.severnhomes.co.uk

Disclaimer — The seller and its agents give notice to those who reads these particulars that: The particulars are prepared for the guidance only of prospective purchasers. They are intended to give a fair general description of the property but not to form an offer of contract. Any information, areas and measurements are approximate only. Rights are reserved to change the specification. The purpose of any imagery is to give a feel for the development, not an accurate description. External materials, finishes, landscaping etc may vary. Properties may also be built handed (mirror image). Please ask for further details.

monks

01743 361422
www.monks.co.uk